

GN 281 | Pivoting connecting clamps

Aluminium



- 1
- 2
- 3
- 4
- 5
- 6
- 7
- 8
- 9
- 10
- 11
- 12
- 13
- 14
- 15
- 16
- 17
- 18

MATERIAL

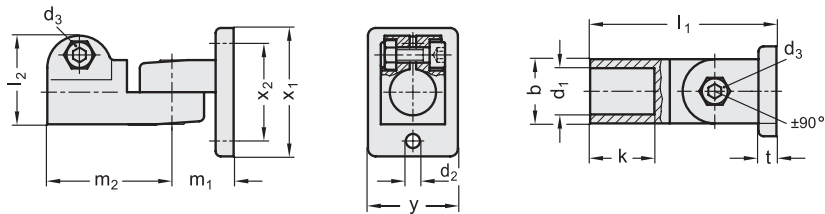
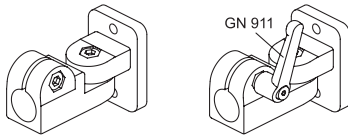
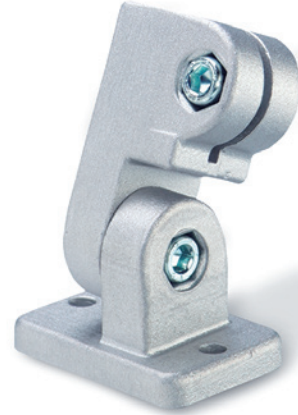
Aluminium, matte finish.
AISI 304 stainless steel screws and nuts.

STANDARD EXECUTIONS

Surface finish index:
- **BL**: natural colour.
- **SW**: epoxy resin coating resistant to UV rays, RAL 9005 black colour.

FEATURES AND APPLICATIONS

The assembly hole of GN 281 connecting clamps allows an excellent match with tubes GN 990 (see page 1368).
GN 281 connecting clamps are an assembly of connecting clamps GN 271 (see page 1341) and GN 275 (see page 1346).
The clamping screws d3 may be replaced by clamping kits GN 911 (see page 1372).



Conversion Table	
1 mm = 0.039 inch	
b	
mm	inch
25	0.98

Connecting clamps

METRIC

Code BL	Code SW	Description	b	d1	d2	d3	k	l1	l2	m1	m2	t	x1	x2	y	d3 Clamping kit	Δ
GN.61011	GN.61016	GN 281-B12-2-*	25	12	5.5	M6	25	72.5	34.5	24	48.5	7	50	38	35	GN 911-M6-22	126
GN.61031	GN.61036	GN 281-B14-2-*	25	14	5.5	M6	25	72.5	34.5	24	48.5	7	50	38	35	GN 911-M6-22	122
GN.61051	GN.61056	GN 281-B16-2-*	25	16	5.5	M6	25	72.5	34.5	24	48.5	7	50	38	35	GN 911-M6-22	120
GN.61071	GN.61076	GN 281-B18-2-*	25	18	5.5	M6	25	72.5	34.5	24	48.5	7	50	38	35	GN 911-M6-22	116

2

* Complete the description of the standard item needed by adding the finish of the connector clamps: BL (blank) or SW (black).